



Organizational Structure

As of May 10, 2010

Led by two Co-Chairs and assisted by two Vice-Chairs, the leadership body for *Our Legacy – Our Future* is the Steering Committee. This Steering Committee is primarily responsible for the effective execution of the national effort through December 31, 2014. It is composed of:

- Two Co-Chairs
- Two Vice-Chairs
- Eighteen Partner Division representatives
- One Development Officers Work Group representative
- Five Ex-officio members
- One ADA Foundation representative

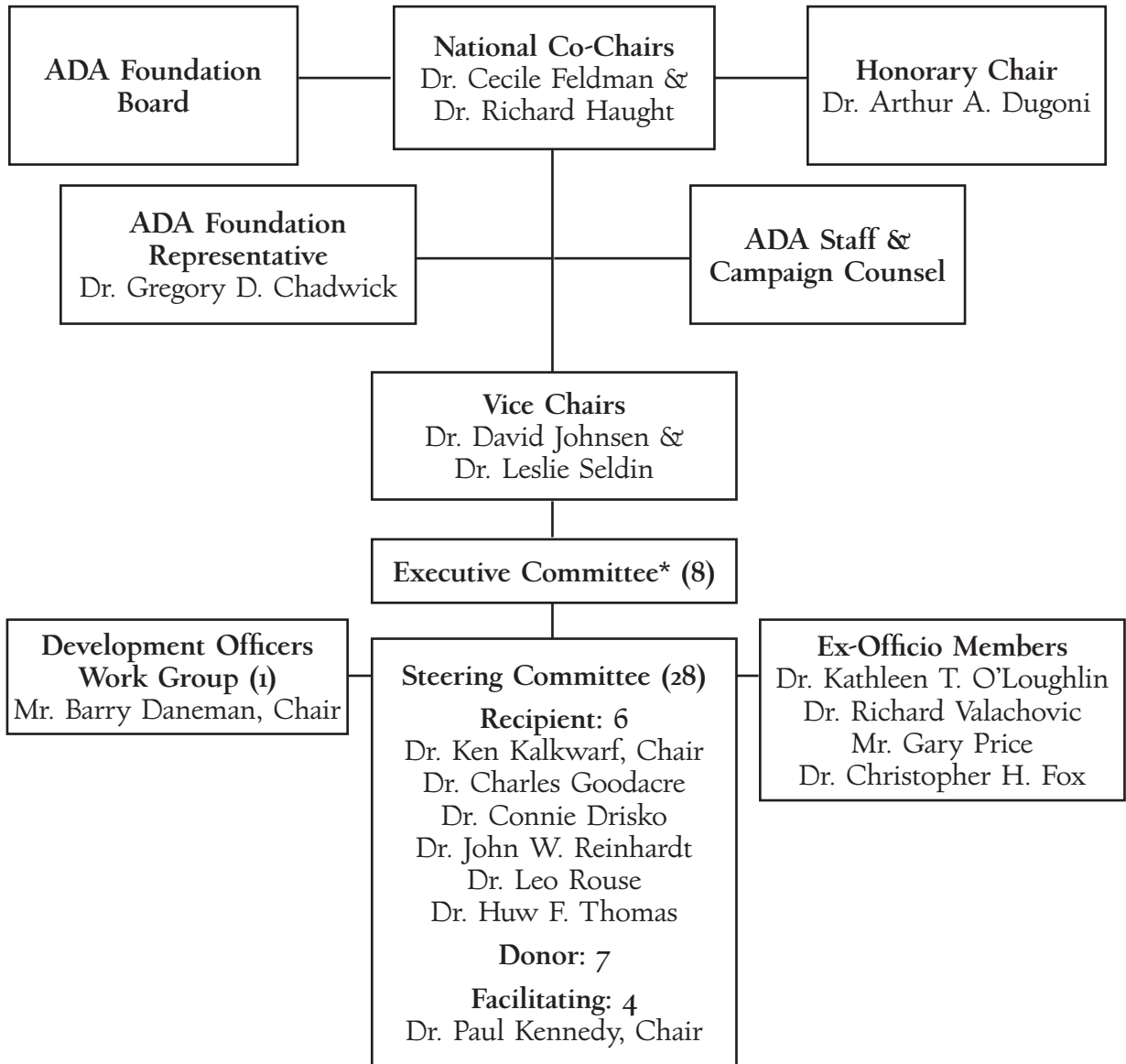
The Co-Chairs and Vice-Chairs recruit and appoint members of the Steering Committee, including Chairs of the Partner Divisions. Members of the Partner Divisions are selected by the National Co-Chairs, Vice-Chairs and the Chair of the appropriate Partner Division.

The five Ex-officio members of the Steering Committee are the Honorary Chair; the Executive Director of the American Association for Dental Research (AADR); the Executive Director of the American Dental Association (ADA); the Executive Director of the American Dental Education Association (ADEA); and the CEO of the Dental Trade Alliance (DTA). In addition to these members, the Co-Chairs may also choose to appoint other Steering Committee members without portfolio.

An eight-member Executive Committee will oversee the day-to-day/operational issues concerning *Our Legacy – Our Future*. This committee will be composed of the two Co-Chairs, the two Vice-Chairs, the Chair of each Partner Division, and a representative appointed by the ADA Foundation.

Dental Education: Our Legacy - Our Future
Steering Committee Organization Chart

As of May 10, 2010



*** Executive Committee Members:**
 Dr. Cecile Feldman & Dr. Richard Haught, National Co-Chairs
 Dr. David Johnsen & Dr. Leslie Seldin, Vice Chairs
 Dr. Gregory Chadwick, ADA Foundation Representative
 Dr. Ken Kalkwarf, Recipient Partners Chair
 TBD, Donor Partners Chair
 Dr. Paul Kennedy, Facilitating Partners Chair